



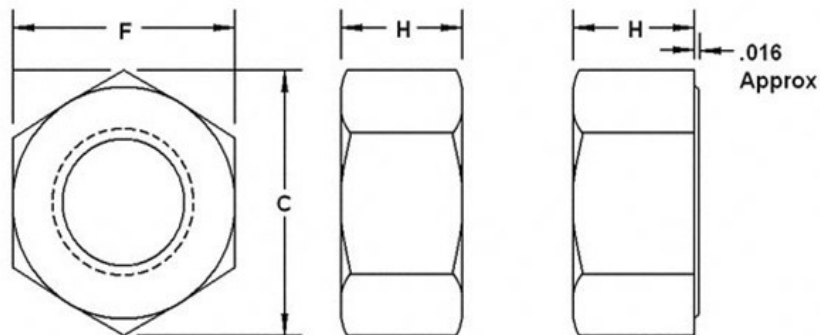
TRANSHOW INDUSTRY LIMITED

GAOYANG RD, ZHOUEAN VILLAGE, JIANGSHAN TOWN
YINZHOU DISTRICT, NINGBO CITY, 315100 CHINA

Tel: +86-574-8736.7873 Fax: +86-574-8736.4349

Http://www.hexnuts.cn Email:transhow@transhow.net

HEX NUT-INCH SERIES ANSI B18.2.2



Nominal Size	F			C		H		
	Width Across Flats			Width Across Corners		Thickness		
	Basic	Max	Min	Max	Min	Basic	Max	Min
3/8	9/16	0.562	0.551	0.650	0.628	21/64	0.337	0.320
1/2	3/4	0.750	0.736	0.866	0.840	7/16	0.448	0.427
5/8	15/16	0.938	0.922	1.083	1.051	35/64	0.559	0.535
3/4	1-1/8	1.125	1.088	1.299	1.240	41/64	0.665	0.617
7/8	1-5/16	1.312	1.269	1.516	1.447	3/4	0.776	0.724
1	1-1/2	1.500	1.450	1.732	1.653	55/64	0.887	0.831
1-1/8	1-11/16	1.688	1.631	1.949	1.859	31/32	0.999	0.939
1-1/4	1-7/8	1.875	1.812	2.165	2.066	1-1/16	1.094	1.030
1-3/8	2-1/16	2.062	1.994	2.382	2.273	1-11/64	1.206	1.138
1-1/2	2-1/4	2.250	2.175	2.598	2.480	1-9/32	1.317	1.245

Dimensions per ASME B18.2.2 1987 (1999)